

Quick Possession

EAST HAVEN

GRANDE PRAIRIE

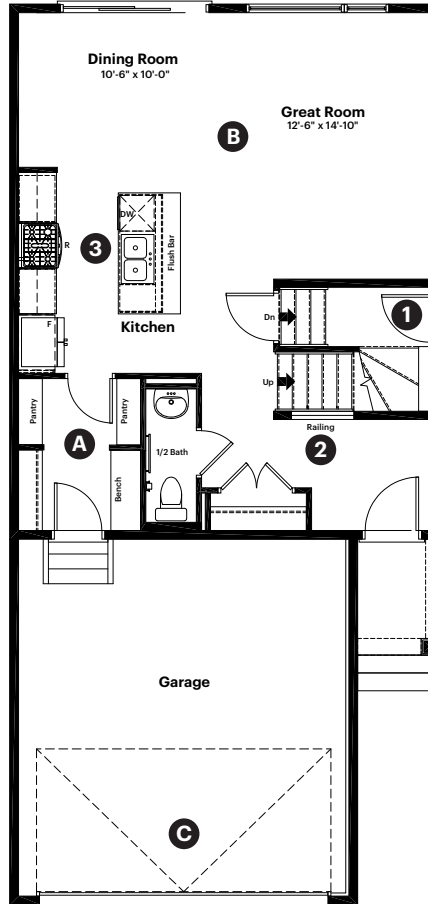
8717 128 Avenue
Grande Prairie, AB

1,596 sq ft
3 bedrooms
2.5 bathrooms

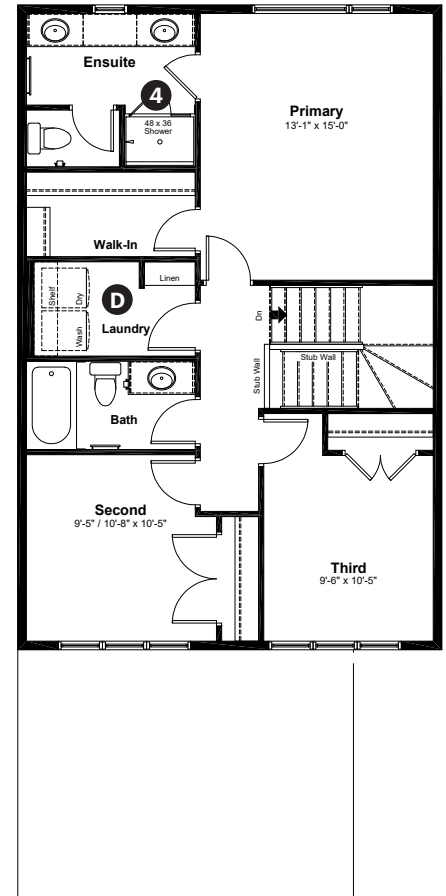
Craftsman Elevation



Main Floor: 720 sq ft



Upper Floor: 876 sq ft



Quick Possession Home Options

- 1 Side entry to the finished basement suite
- 2 Main floor railing
- 3 Gas range and chimney hoodfan
- 4 Tiled walls in ensuite shower

Quick Possession Home Highlights

- A Walk through pantry with built-in bench and MDF shelving
- B 9' high main floor ceilings
- C 8' high overhead garage door
- D Spacious laundry room

Dimensions, sizes, specifications, layouts and materials are approximate only and subject to change without notice. The builder reserves the right to make change and modifications to the information contained herein. E.&O.E.

Front Drive 190

Quick
Possession

EAST HAVEN

GRANDE PRAIRIE

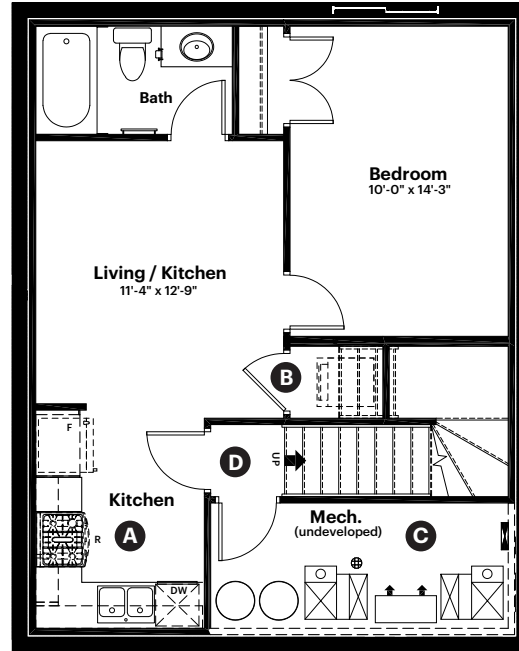
8717 128 Avenue
Grande Prairie, AB

501 sq ft
1 bedroom
1 bathroom

Craftsman Elevation

Anthem 

Finished Basement Suite: 501 sq ft



Basement Suite Highlights

- A** Kitchen with gas line and appliance rough ins
- B** Laundry closet with rough in for washer/dryer
- C** Mechanical room with dual furnace & hot water tanks
- D** Enclosed landing with fire rated door and side entry

Dimensions, sizes, specifications, layouts and materials are approximate only and subject to change without notice. The builder reserves the right to make change and modifications to the information contained herein. E.&O.E.

Front Drive 190

Quick
Possession

EAST HAVEN

GRANDE PRAIRIE

8717 128 Avenue
Grande Prairie, AB

1,596 sq ft
3 bedrooms
2.5 bathrooms

Craftsman Elevation

Anthem 



Artists interpretation only. May not reflect actual colors.

Features

Anthem Construction Standards

- Low maintenance architectural asphalt shingles
- Anthem maximizes window coverage on every home to provide your home with natural light
- Windows are also triple plane low-E argon filled windows above grade
- Includes an 50 gallon gas water tank and 96% high-efficient gas furnace with dual-stage with variable speeds. It also has an integrated HRV system with dedicated pick up locations in each bathroom with timers for easy use
- Painted MDF shelving in all closets and pantry
- Decora type switches throughout the home
- R-50 blown insulation in all attic spaces

The Interior

- Ceilings are finished with a splatter texture
- Luxury vinyl plank flooring on main floor
- Luxury vinyl tile flooring in upper bathrooms and laundry
- Carpet on finished stairs and upstairs with an 8lb underlay
- Quartz countertops in kitchen and bathrooms
- Undermount stainless steel kitchen sink
- Stainless steel appliance package in the main kitchen
- Brushed nickel lighting package
- Spindle railing on main floor stairwell

Dimensions, sizes, specifications, layouts and materials are approximate only and subject to change without notice. The builder reserves the right to make change and modifications to the information contained herein. E.&O.E.

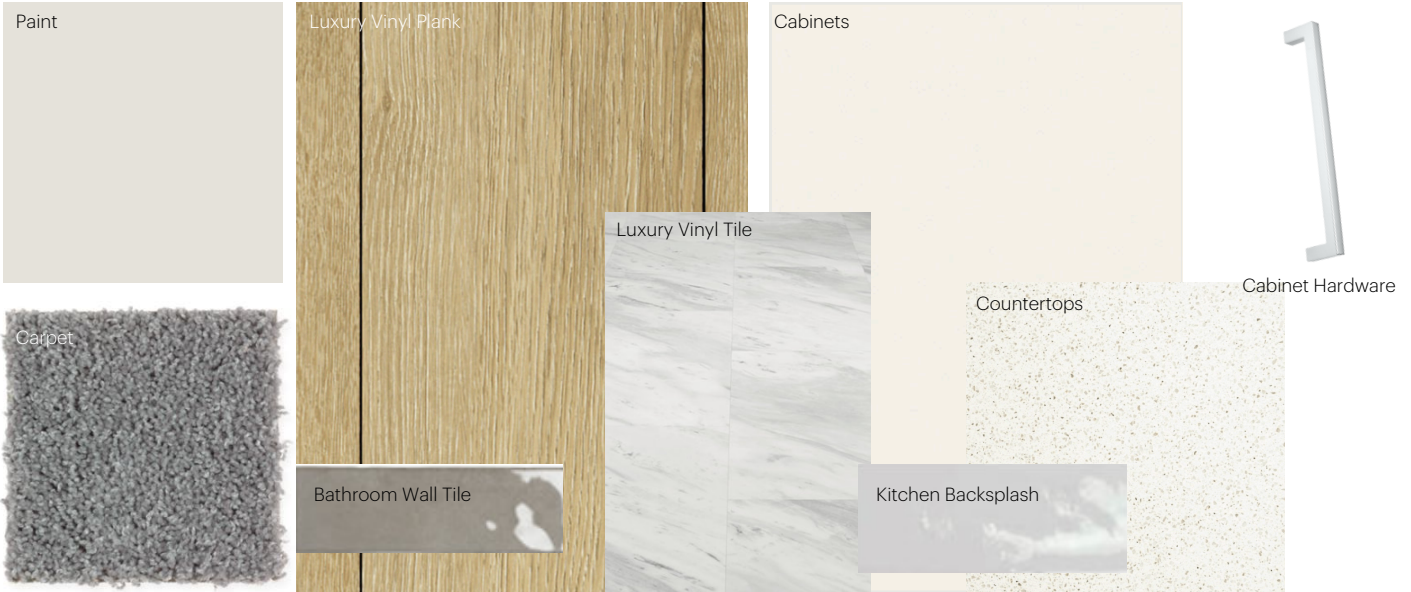
Front Drive 190

Anthem Home Palette Selections

Model: Front Drive 190

Address: 8717 128 Avenue, Grande Prairie

Cabinets, Flooring and Countertops



Plumbing



Pedestal Sink
*faucet shown is not included

Finishing



Anthem Home Palette Selections

Model: Front Drive 190

Address: 8717 128 Avenue, Grande Prairie

Lighting



Dining Room



Island Pendant



Stairwell



Bathrooms

*Number of lights determined by size of vanity

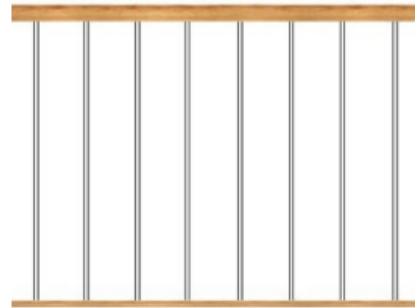


Halls / Closets

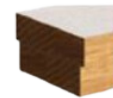


Bedrooms

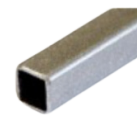
Railing



Spindle Pattern



Handrail



Iron Color



Post Cap

Post

Appliances



Fridge | Main Kitchen



Gas Range | Main Kitchen



Chimney Hoodfan | Main Kitchen



Dishwasher | Main Kitchen



Microwave Hoodfan | Basement Suite

